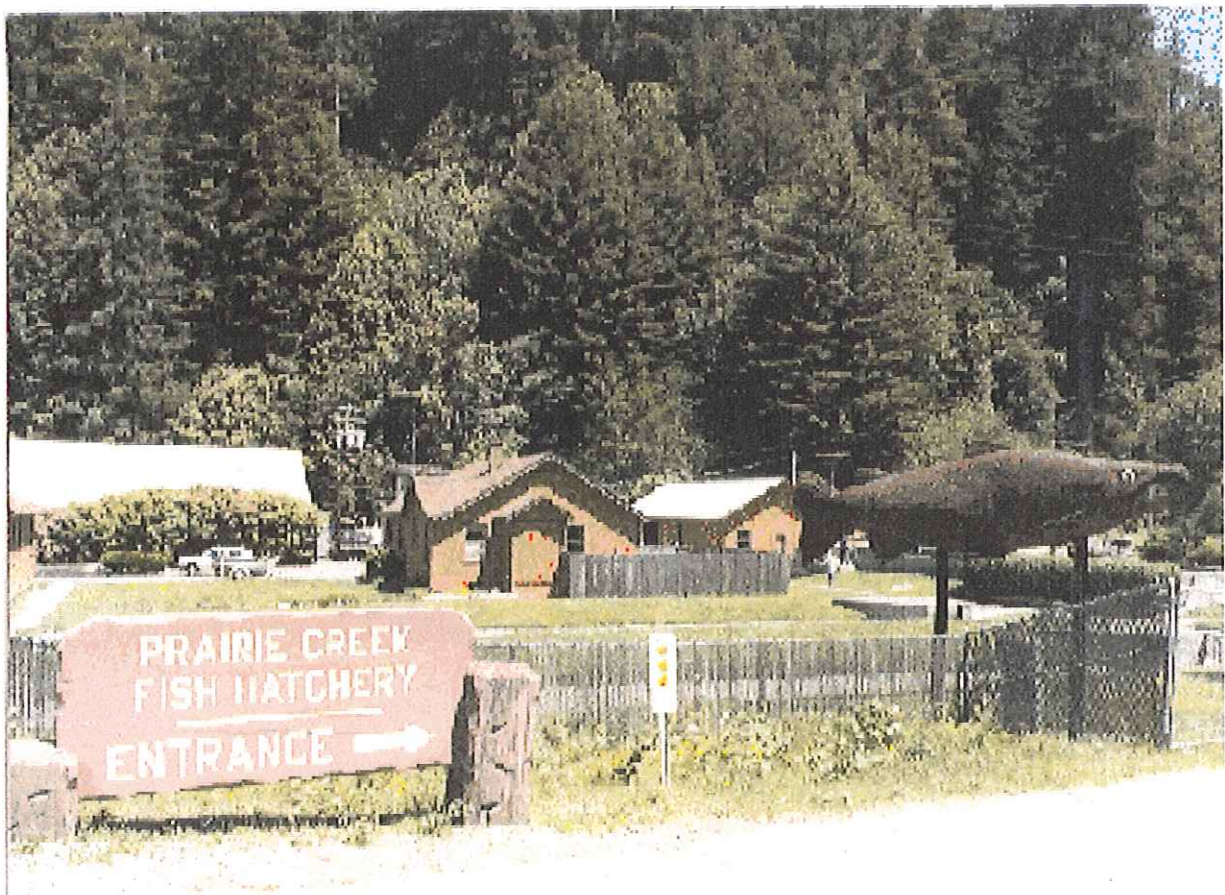


## **Redwood Creek National Watershed Center Watershed Training, Conferences, and Book List**



Redwood Creek National Watershed Center  
Watershed Training, Conferences, and Book List

August 2000

Brian Barker  
Mary Cadien  
Mike McDowall  
Travis Fulton

## Table of Contents

Introduction.....	3
Methodology.....	3
Limitations.....	4
Conclusion.....	4
Watershed Training Websites.....	5
Watershed Conferences.....	14
Watershed Book List.....	30
2 <sup>nd</sup> Advisory Committee survey results (regarding offered training).....	35
Conference Website Homepages.....	Appendix A
Training Website Homepages.....	Appendix B

## **Introduction**

In developing the Redwood Creek National Watershed Center (RCNWC) Business Plan, the authors of the plan found that more information is needed to clarify the specific types of watershed training programs to be offered. Our report provides information consisting of existing local and national watershed management training programs, conferences, and literature. This information will assist in development of the Center to meet the needs of potential customers when outreaching to interested customers.

The majority of this information was collected via the World Wide Web. The report consists of four main sections: web pages with watershed training program information, past and upcoming watershed related conferences, watershed related literature, and a phone survey directed to the Redwood Creek Watershed Center Advisory Committee to clarify specific types of watershed training offered by themselves or the organization they are affiliated with.

## **Methodology**

Compiling the book list consisted mainly of searching the Humboldt State University Library catalyst using the search phrase "watersheds." This yielded a wide array of book titles along with Master's theses that focused on local watersheds. The periodical list was compiled using the Library catalyst as well. Online bookstores were also used and provided books that were published more recently than those found in the library. Additionally, the online bookstores often provided links to other books of similar subject matter.

Compiling the web page section consisted of searching the World Wide Web using a number of different search engines. Key words such as, "watershed training, watershed management, and environmental services" were used. These sites yielded a variety of information, which was sorted through to find which were most applicable to this report. Short summaries of the training programs were sometimes provided and other times created through review of the web site.

In creating the conference list, the Internet was the main resource. A secondary resource that proved to be valuable were folders with pamphlets and documents that have been sent in care of the watershed center and those affiliated with it. Both were scanned through for watershed-related conferences and information for parent organizations. Each page was printed out for hard copies, underlined and noted for watershed related conferences. All of the information that went into the conference material for the report was organized by title, place, date, contact information, and web address where the information was found. The conference list is chronologically organized starting with upcoming conferences and ending with past. The indexed material is in no particular order, but is there to be looked through for any other interesting material.

The phone survey was developed through three drafts, each draft being reviewed by the project supervisor of this report, Paula Yoon. The advisory committee phone list, provided by Yoon, was divided among the four authors of this report. Many of the committee members could not be reached during the first call but were later reached

during subsequent calls. Others, however, could not be reached by phone and were left messages and/ or were sent the survey via email.

### **Limitations**

Time proved to be the greatest restraint for the project given its ten-week time frame. Watershed conferences scheduled during the development of this report would have been helpful to attend, but were not. Additionally, this being the buisiest season for watershed technicians, it was difficult to receive responses. The emphasis on the Internet for information brings into question the validity (quality and timeliness) of the information found.

### **Conclusion**

Given the short time frame for this report development, it can be utilized as a basis for continued research by the decision makers of the RCNWC. Basic information has been given so that others can review it and research further into what would coincide well with the Center. In addition to this report, contacting watershed professionals and professors would be a helpful way to gather more valuable information. In compiling this report, time limited the amount of investigations that could have been done by going to conferences, workshops, or interviewing persons actually involved in watershed issues other than the RCNWC Advisory Committee. Researching the literature page of this report would also be helpful. This report should provide a foundation for further research into potential services and contacts for the Redwood Creek National Watershed Center.

## WATERSHED TRAINING WEBSITES

### 1. **Arthur Carhart National Wilderness Training Center**

[www.wilderness.net/carhart](http://www.wilderness.net/carhart)

US Federal Government inter-agency training center devoted to training federal and state land managers who have wilderness management responsibilities; They have also developed school curricula on wilderness for primary and secondary education levels.

### 2. **BLM**

*Courses in Soil, Water and Air*

[www.ntc.blm.gov/courses/cssoil.html](http://www.ntc.blm.gov/courses/cssoil.html)

Courses offered include:

- Advanced groundwater hydrology
- Riparian management and Channel Evolution
- Using Aerial Photos to Access PFC

### 3. **California Watershed Information Technical System**

*Education and Training Opportunities*

<http://ceres.ca.gov/watershed/education.html>

This site has links to many useful sites including:

- California Watershed and Fisheries Resource Conservation Education
- Downstream: Planning for the Future of Marine Coastal Watersheds
- The Return of the Salmon: Restoring the Fish to Rivers and Watersheds
- Tomki Watershed: A Project on Community Concern

**4. Department of Fish and Game**  
*State Watershed Academy*

<http://ceres.ca.gov/watershed/education/academy.html>

The State Watershed Academy is a three to five day modular training program presently designed to educate resource professionals about watershed assessment and risk analysis skills. The core course uses an approach based on the interface between anadromous fish life history and habitat requirements, physical attributes of the stream environment and stream function. Two to three day short courses focused on specific aspects of the core course curriculum to meet local needs will be developed later this year for interested resource conservation districts, watershed groups, local governments and landowners on an as-needed basis.

**5. Educating Young People About Water**

<http://www.uwex.edu/erc/ywc/sumlist2.htm>

This site is devoted to offering many different training programs on various watershed issues as well as related water issues. The programs are designed to be used by teachers and are aimed at youths of various ages

**6. EMS-I Training**

<http://www.ems-i.com/training.html>

EMS-I conducts first-class training courses in water resources modeling on a continuing basis throughout the year. EMS-I instructors have more than 30 years of combined experience in software development of computer programs for scientific modeling and visualization. All instructors are affiliated with Brigham Young University's Environmental Modeling Research Laboratory. Using their unique experience, instructors have developed a series of short courses which provide theoretical background, modeling and presentation skills, and hands-on experience under the tutelage of the software developers.

7. **EPA**  
*Office of Water*

[www.epa.gov/ow/](http://www.epa.gov/ow/)

The interagency Watershed Training Cooperative (IWTC) was formed to improve cross-agency cooperation and develop and implement interagency infrastructure for watershed training. The IWTC members have a common interest in developing timely, comprehensive and economical watershed management training. By sharing scientific expertise, facilities, and other resources, federal agencies can make better use of the resources available for training. By receiving the same basic training courses, government agencies may improve their ability to communicate and collaborate more effectively on resource management and regulatory issues.

8. **Green**  
*Watershed Education Resources on the Internet*

[www.igc.apc.org/green/resources.html](http://www.igc.apc.org/green/resources.html)

Green is working with EcoNet to compile pointers to water-related resources on the Internet. This site offers extensive links to training opportunities via the web. The links on this site deliver information on specific watersheds from around the world.

9. **Institute for Training and Development**  
*—note: see watershed management*

<http://www.itd-amherst.org/TrainingCourses.htm>

Four week program goal: To strengthen participants' skills in assessing water quality and managing watersheds based upon their improved understanding of related environmental, human health and socioeconomic factors. Participants will inventory and field test the present situation in rivers, lakes, watersheds and groundwater sources near the training center.



**10. Kickapoo Watershed Consortium**  
*Integrating GIS into Watershed Education*

[www.cwspot.com/waterkick/](http://www.cwspot.com/waterkick/)

The current proposal builds on both past and current environmental education initiatives in the Kickapoo Valley by linking eight schools in the Valley in a common pursuit: water quality monitoring of the Kickapoo River. The project also provides the schools, teachers, and students with a common technological format to interpret and share their inquiries and analysis, a GIS, and links them in a virtual connection through sharing of data and information over the Internet.

**11. Livable Communities Resource Center-**  
*Watershed Academy*

[http://www.livablecommunities.gov/toolsandresources/wr\\_academy.htm](http://www.livablecommunities.gov/toolsandresources/wr_academy.htm)

Watershed Academy provides training in watershed protection and management by drawing from experiences gained in local, state, tribal and federal watershed projects. Citizens and water resource professionals in the public and private sectors can take courses, browse web-based training units, and read documents related to watershed management.

**12. The Municipal Watershed Training Program**

<http://www.edc.uri.edu/cewq/munitrai.html>

The Municipal Watershed Training Program offers training in the science, management, and regulation of water resources for community leaders and volunteer board members. Its goal is to provide decision makers with the skills and resources to identify local water quality problems and to adopt effective pollution controls.

**13. NACO Projects and Programs**  
*Watershed Management Project Resources*

[www.naco.org/programs/environ/watershed\\_res.cfm](http://www.naco.org/programs/environ/watershed_res.cfm)

A National watershed clearinghouse: Contains watershed information, tools and techniques. Features include the National Watershed Network and National Watershed Library.

**14. Natural Resource Technology Program:**  
*Watershed Restoration Technician*

<http://www.ghc.ctc.edu/NRT/Programs/Water.htm>

This certificate of completion offering is designed for students desiring to learn state-of-the-art techniques in watershed analysis, ambient monitoring and watershed restoration. This innovative Ahands-on@ program might be especially attractive to displaced timber workers and fishers seeking short-term training in natural resources career areas.

**15. Pennsylvania State Parks**  
*Kings Gap Environmental Education and Training Center*

[www.dcnr.state.pa.us/stateparks/parks/k-gap.htm](http://www.dcnr.state.pa.us/stateparks/parks/k-gap.htm)

Kings Gap Environmental Education and Training Center seeks to fulfill the Pennsylvania Bureau of State Parks' unique opportunity to teach about the natural world and critical environmental issues facing society. It also helps provide skills for appreciating and enjoying the outdoors. The center provides a wide variety of educational to accomplish this goal. The Watershed Trail provides a unique hands-on approach to watershed education.

**16. Portland State University**  
*Wetland, River and Watershed Professional Development Training Program*

[www.extended.pdx.edu/wetdel/](http://www.extended.pdx.edu/wetdel/)

The goals of the program are to provide you and your agency / organization with state of the art, hands on skills that will quickly and effectively permit you to demonstrate complete competence in your field. We:

- Provide the most experienced and well connected professional instructors
- Design "hands on" curricula that specifically delivers what you need
- Offer optional graduate level PSU credit
- Award certificates of completion for every course
- Offer 10 to 20% fee reductions

**17. Scientific Software Group**  
*Training courses*

[www.scisoftware.com/html/training.html](http://www.scisoftware.com/html/training.html)

These training courses, whether regional or on-sit, provide comprehensive and intensive training, helping you to realize the greatest return on your investment. Instruction is provided by the actual developers of the software. These courses have been specifically designed for small groups to provide more hands-on, one-on-one interactive learning and usable experience than traditional courses. Held in hotel conference facilities at resort locations, the courses afford a focused training environment away from the distractions of the office. Customized on-sit seminars and training courses are also available for some products. On-Sit training is more cost-effective if you are planning on having many people from your company attend the course.

**18. Trent University**  
*Watershed Science Centre*

[www.trentu.ca/wsc/](http://www.trentu.ca/wsc/)

The watershed science centre is a unique interdisciplinary and inter-institutional alliance for integrated science, facility sharing, expert consultation, management services, training and technology transfer on watershed ecosystem management, health, protection and rehabilitation. Examples of classes offered: The Temperate Wetlands Restoration training course and the Riparian Zone Workshop.

**19. University of Arizona**  
*Training courses in watershed management*

<http://ag.arizona.edu/OALS/watershed/training/>

Embedded in the concept of watershed management is the recognition of the interrelationships among land use, soil, and water, and the linkages between uplands and downstream areas. Watershed management practices are changes in land use and vegetative cover, and other non-structural and structural actions, carried out on a watershed to achieve watershed management objectives.

**20. The URI Cooperative Extension**  
*Watershed Training Program*

<http://www.edc.uri.edu/cewq/program.html>

Provide local land use decision makers with the skills and resources needed to identify pollution problems, assess impacts to local water resources, and adopt effective pollution control practices. The URI Municipal Training Program is a community-based technology transfer program for local decision-makers. We offer a tier of educational programs focusing on training, tools for watershed management, and follow-up technical assistance. Educational workshops range from evening or one-day workshops to intensive multi-session short courses tailored for local officials in targeted watersheds.

**21. USGS**  
*National Wetlands Research Center*

[www.nwrc.nbs.gov/training/2ktrain.html](http://www.nwrc.nbs.gov/training/2ktrain.html)

The U.S. Geological Survey of the Department of the Interior is presenting a series of topical workshops pertaining to mapping, vegetation, photo-interpretation, remote sensing and GIS. The workshops are part of an effort to exchange information and provide access to spatial technologies developed at the center for natural resource survey. The workshops are available to the general public, educators, and state and federal agencies. Workshop participation by the international community is also greatly encouraged.

**22. Virginia Commonwealth University**  
*Center for Environmental Studies*

<http://www.vcu.edu/cesweb/index2.htm>

Established in 1993, proven excellence in research, teaching and service. Currently offering expansive environmental training opportunities.

**23. Watershed Management**  
*Watershed Restoration Program - Forest Worker Training*

<http://www.fcsn.bc.ca/catalogue/workertraining.htm>

This five-day course is designed to introduce participants to the Watershed Restoration Program (WRP) and the field techniques used on WRP projects. Provides classroom and field sessions. The course follows the progression of sediment and water downslope, moving from upslope activities to riparian concerns to in-stream works. There is a strong emphasis on teaching field techniques. Although the course is designed to train field workers in WRP

techniques, it provides a holistic view of watersheds and their processes, which will be of interest to many audiences.

**24. Watersheds are Vital**

*Watershed Management council*

<http://glinda.cnrs.humboldt.edu/wmchome/aboutwmc.html>

In joining this committee, one's membership privileges include a quarterly newsletter, discounts on WMC events, invitation to the Council's biennial Watershed Management Conference, and notification of all special events. Participation in field trips and special membership training is available for a modest fee.

**25. Wetlands for Water quality Improvement**

[http://www.humboldt1.com/~water/main\\_pages/short\\_course.html](http://www.humboldt1.com/~water/main_pages/short_course.html)

This course will be directed by Dr. Robert Gearheart and is intended for design engineers and wetland scientists who are interested or involved in the planning, designing, and management of wetlands for wastewater treatment and pollution abatement. The course will deal with wetland processes, wetland hydrology/hydraulics, wetland plants/epiphytes, habitat features, design consideration and construction elements.

**26. Working at a Watershed Level:**

*A training course in watershed planning and management*

<http://www.statesnews.org/ecos/working.htm>

Working at a Watershed Level was developed by a consortium of federal agencies, state/local groups and private organizations to improve cross-agency watershed training. The course is designed as an introductory level basic training program for agency personnel newly assigned to watershed teams, veteran watershed managers in need of a refresher course and members of citizens groups interested in a cooperative approach to watershed issues. One-week course covering all facets of watershed work, including-stream ecology, system dynamics, assessment and analysis, planning methodologies, restoration/management techniques, public involvement strategies and outreach program development

## ***OTHER WATERSHED RELATED SITES***

1. [www.uwex.edu/erc/ywc/sumlist2.htm](http://www.uwex.edu/erc/ywc/sumlist2.htm)
2. [www.stopnps.com/educate/htm](http://www.stopnps.com/educate/htm).
3. [www.rmes.cstudies.ubc.ca/intergrated/](http://www.rmes.cstudies.ubc.ca/intergrated/)
4. [www.metrokc.gov/exec/esa/hometrps.html](http://www.metrokc.gov/exec/esa/hometrps.html)
5. [www.usgs.gov/education](http://www.usgs.gov/education)
6. [www.wilderness.net](http://www.wilderness.net)

## CONFERENCE LIST

### **1. International Conference On Restoring Nutrients To Salmonid Ecosystems**

Where- Eugene, Oregon

When- April 24- April 26, 2001

Contact Info- None

Web Address- [http://4sos.org/wssupport/info\\_events/workshop.html](http://4sos.org/wssupport/info_events/workshop.html)

### **2. Taking Nature Seriously**

Where- Eugene, Oregon

When- February 25- February 27, 2001

Contact Info- None

Web Address- [http://4sos.org/wssupport/info\\_events/workshop.html](http://4sos.org/wssupport/info_events/workshop.html)

### **3. National Groundwater Association National Convention and Exposition and 2000 NGWSE Annual Meeting and Conference on Groundwater: A Transboundary Strategic and Geopolitical Resource**

Where- Las Vegas, Nevada

When- December 13- December 15, 2000

Contact info- National Groundwater Association

601 Depsey Road

Westerville, Ohio 43081

Tel: (614) 898-7791 or (800)551-7379

Fax: (614) 898-7786

Email: [ngwa@ngwa.org](mailto:ngwa@ngwa.org)

Web Address- <http://www.ngwa.org>

#### **4. Watershed Management: from Theory to Implementation**

Where- Las Vegas, Nevada

When- December 23- December 14, 2000

Contact Info- National Groundwater Association  
601 Depsey Road  
Westerville, Ohio 43081  
Tel: (614) 898-7791 or (800)551-7379  
Fax: (614) 898-7786  
Email: [ngwa@ngwa.org](mailto:ngwa@ngwa.org)

Web Address- <http://www.ngwa.org>

#### **5. Erosion Control 2000**

Where- Portland, Oregon

When- November 28- November 30, 2000

Contact Info- None

Web Address- [http://4sos.org/wssupport/info\\_events/workshop.html](http://4sos.org/wssupport/info_events/workshop.html)

#### **6. The 8<sup>th</sup> Biennial Conference of the “ Managing Watershed in the New Century”**

Where- Asilomar Conference Center, Monterey/Carmel, California

When- November 27- November 30, 2000

Contact Info- The Watershed Management Council  
Tel: (510) 273-9066

Web Address- <http://glinda.cnrs.humboldt.edu/wmchome/>



**7. Third Water Information Summit- Status, Challenges, and Future Opportunities of Internet-Based Communications Supporting Sustainable Water Resource Management**

Where- Hyatt Regency Hotel Miami, Florida

When- November 3- November 5, 2000

Contact Info- Florida Center for Environmental Studies  
3932 RCA Blvd. Suite 3210  
tel : +! (561) 6918557  
fax : +1 (561)6928540  
email : [tdodge@ces.fau.edu](mailto:tdodge@ces.fau.edu)

Web Address- <http://www.waterweb.org/wis3/>

**8. WEFTEC 2000 73<sup>rd</sup> Annual Conference and Exposition**

Where- Anaheim Convention Center, Anaheim, California

When- October 14- October 18, 2000

Contact Info- Water Environment Federation  
Tel: 1-800-666-0206  
Fax: 1-703-684-2492

Web Address- <http://www.wef.org/Weftec/index.htm>

**9. Stream Investigations, Bank Stabilization, and Erosion Control**

Where- Lake Tahoe, California

When- September 19- September 21, 2000

Contact Info- None

Web Address-[http://4sos.org/wssupport/info\\_events/workshop.html](http://4sos.org/wssupport/info_events/workshop.html)

**10. FAO Electronic-workshop on Land-Water Linkages in Rural Watersheds**

Where- Online Virtual Conference

When- September 18-October 28, 2000

Contact Info- None

Web Address- <http://www.agnic.org/mtg/2000p.html>

**11. Western Conservation Administrative Officers Association Conference 2000**

Where- Oregon Department of Fish and Game Portland, Oregon

When- September 17- September 20, 2000

Contact Info- None

Web Address- <http://dfw.state.or.us/ODFWhtml/Conference/ODFW-WCAOA.htm>

**12. Oregon Watershed Weeks Looking for Groups that Want to Host Events**

Where- To be Arranged

When- September 16- October 22, 2000

Contact Info- None

Web Address- [http://4sos.org/wssupport/info\\_events/workshop.html](http://4sos.org/wssupport/info_events/workshop.html)

### **13. Sustainable Tourism (Ecotourism) and the Conservation of Wetlands**

Where- To be Determined

When- September 11- September 13, 2000

Contact Info- Association of State Wetland Managers

PO Box 269  
1434 Helderberg Trail  
Berne, New York 12023  
Tel: (518) 872-1804  
Fax: (518)8722171  
Email: [aswm@aswm.org](mailto:aswm@aswm.org)

Web Address- <http://www.aswm.org/upcomming.htm>

### **14. 12<sup>th</sup> Annual Trout Stream Habitat Improvement Workshop**

Where- Waterville Valley, New Hampshire

When- September 10- September 13, 2000

Contact Info- None

Web Address- <http://www.agnic.org/mtg/200k.html>

### **15. 2000 Salmon Homecoming Forum Salmon Recovery Comes Full Circle**

Where- Bell Harbor International Conference Center, Seattle, Washington

When- September 6, 2000

Contact Info- Salmon Homecoming Celebration

1483 Alaskan Way  
Seattle, Washington  
Tel: (206) 386-4315  
Fax: (206) 386-4328  
Email: [hindlesusanne@uswest.net](mailto:hindlesusanne@uswest.net)

Web Address- <http://www.salmonhomecoming.org/salmonforum/forum.html>

**16. AWRA 2000 Summer Specialty Conference: International Conference on Riparian Ecology and Management in Multi-Land Use Watersheds**

Where- Double Tree Portland/Loyd Center Hotel

When- August 28- August 31, 2000

Contact Info- American Water Resources Association  
4 West Federal Street  
PO Box, 1626  
Middleburg, Virginia 20118

Web Address- <http://www.ctic.purdue.edu/cgi-bin/Calendar.exe>

**17. Riparian Ecology and Management in Multi-Land Use Watersheds**

Where- Portland, Oregon

When- August 27- August 31, 2000

Contact Info- None

Web Address- <http://www.agnic.org/mtg/2000p.html>

**18. 2000 Annual Summer Specialty Conference- International Conference on Riparian Ecology and Management in Multi-Land Use Watersheds**

Where- Portland, Oregon

When August 27- August 31, 2000

Contact Info- None

Web Address- <http://www.awra.org/meetings/conferenceindex.html>

**19. Stream Investigations, Bank Stabilization, and Erosion Control**

Where- Seattle, Washington

When- August 16- August 18, 2000

Contact info- None

Web Address- - [http://4sos.org/wssupport/info\\_events/workshop.html](http://4sos.org/wssupport/info_events/workshop.html)

**20. International Conference on Forest Ecosystems: Ecology, Conservation and Sustainable Management**

Where- Chengdu, China

When- August 15- August 17, 2000

Contact Info- None

Web Address- <http://www.agnic.org/mtg/2000k.html>

**21. Project WET (Watershed Education for Teachers Workshop)**

Where- North Bend, Washington

When- August 10- August 11, 2000

Contact info- none

Web Address- [http://4sos.org/wssupport/info\\_events/workshop.html](http://4sos.org/wssupport/info_events/workshop.html)

**22. Trout Unlimited Year 2000 National Convention**

Where- Syracuse, New York

When- August 9- August 13, 2000

Contact Info- Peter J Gray  
301 Wedgewood Terrece  
DeWitt, New York 13214  
Tel: (315) 446-8681  
Email: [peterg@syr.edu](mailto:peterg@syr.edu)

Web Address- [www.geocities.com/Yosemite/Geogr/8232/](http://www.geocities.com/Yosemite/Geogr/8232/)

**23. 6<sup>th</sup> International Wetland Symposium**

Where- Quebec City, Ontario

When- August 6- August 12, 2000

Contact Info- Elizabeth MacKay  
Tel: (418) 657-3853  
Email: [cqvb@cqvb.qc.ca](mailto:cqvb@cqvb.qc.ca)

Web Address- <http://www.cqvb.qc/wetland2000/>

**24. OFWIM 2000- Organization of Fish and Wildlife Information Managers  
Annual Meeting and Workshop: Fish and Wildlife Information Meets the  
Internet!**

Where- Silver Creek, Colorado

When- August 5- August 7, 2000

Contact Info- None

Web Address- <http://www.agnic.org/mtg/2000k.html>

**25. Living Downstream in the Next Millennium: Reconciling Watershed Concerns  
with Basin Management- Universities Council on Water Resources Annual  
Conference**

Where- New Orleans, Louisiana

When- August 1- August 4, 2000

Contact Info- Advisory Committee on Water Information (see below)

Web Address- <http://water.usgs.gov/wicp/whatsnew.html>

**26. Living Downstream in the Next Millennium: Reconciling Watershed Concerns with Basin Management: Universities Council on Water Resources**

Where- Hilton New Orleans Riverside, New Orleans, Louisiana

When- July 31- August 4, 2000

Contact Info- Jeff Ballweber  
Water Resources Research Institute  
PO Box AD  
Mississippi State, Mississippi 39762  
Email: ballweber@engr.msstate.edu

Web Address- <http://www.uwin.siu.edu/ucowr>

**27. Managing River Flows for Biodiversity: A Conference on Science, Policy, and Conservation Action**

Where- Colorado State University. Fort Collins, Colorado

When- July 30- August 2, 2000

Contact Info- [nsilk@tnc.org](mailto:nsilk@tnc.org)

Web Address- <http://www.stream.fs.fed.us/infopage.html>

**28. Riparian and Aquatic Ecosystem Monitoring**

Where- Forest Grove, Oregon

When- July 24- July 28, 2000

Contact Info- None

Web Address- [http://www.4sos.org/wssupport/info\\_events/workshop.html](http://www.4sos.org/wssupport/info_events/workshop.html)

**29. Salmon 2000**

Where- Juneau, Alaska

When July22, 2000

Contact Info- None

Web Address- [http://www.4sos.org/wssupport/info\\_events/workshops.html](http://www.4sos.org/wssupport/info_events/workshops.html)

**30. Arroyo Grande Creek Watershed Forum**

Where- N/A

When- June 30, 2000

Contact Info- None

Web Address- <http://www.fix.net/surf/salmon/creek/agcreek.htm>

**31. ASCE Watershed Management 2000: Science and Engineering Technology for the New Millennium**

Where- Fort Collins, Colorado

When- June 21- June 24, 2000

Contact Info- American Association of Civil Engineers (ASCE)  
1801 Alexander Bell Drive  
Reston, Virginia 20191-4400  
Tel: (800) 548-2723 Or (703) 295-6300  
Fax: (703) 684-2413  
Email: [msc@wef.org](mailto:msc@wef.org)

Web Address- [www.asce.org/gsd/sections/colorado/wm2000/](http://www.asce.org/gsd/sections/colorado/wm2000/)



**32. Second Watershed Conference on Watershed Conservation 2000: Urbanization, Ecosystem Management, and Community Issues**

Where-University of Massachusetts, Amherst, Massachusetts

When- June 2, 2000

Contact Info- Timothy Randhir, Assistant Professor  
Holdsworth Natural Resources Center  
University of Massachusetts  
Amherst, Massachusetts 01003  
Tel: (413) 545-3969  
Fax: (413) 545-3943  
Email: [randhir@forwild.umass.edu](mailto:randhir@forwild.umass.edu)

Web Address- <http://madras.fnr.umass.edu/conference2000.htm>

**33. Sustainability of Wetlands and Water Resources**

Where- Oxford, Mississippi

When- May 23- May 25, 2000

Contact Info- None

Web Address- <http://www.agnic.org/mtg/2000p.html>

**34. Riparian Buffer Conference**

Where- Raleigh, North Carolina

When- May 22, 2000

Contact Info- None

Web Address- <http://www.agnic.org/mtg/2000k.html>

**35. Conference on the Role of Wetlands in Watershed Management**

Where- Arcata, California

When- May 18- May19, 2000

Contact Info- None

Web Address- <http://www.agnic.org/mtg/2000p.html>

**36. Riparian Management Areas: The Ecology, Functions, and Management**

Where- Wilsonville, Oregon

When- April 24- April 25, 2000

Contact Info- None

Web Address- <http://www.agnic.org/mtg/2000k.html>

**37. National Wetlands Research Center Research and Applied Science Meeting**

Where- Lafayette, Louisiana

When- April 19- April 20, 2000

Contact Info- None

Web Address- <http://www.agnic.org/mtg/2000j.html>

**38. Watershed Approach to Improving Water Quality: Fact or Fantasy?**

Where- LaCrosse, Wisconsin

When- March 28- March 30, 2000

Contact Info- None

Web Address- <http://www.agnic.org/mtg/2000j.html>

**39. Conference on Land Stewardship in the 21<sup>st</sup> Century: The Contributions of Watershed Management**

Where- Tucson, Arizona

When- March 13- March 16, 2000

Contact Info- None

Web Address- <http://etd.pnl.gov:2080/hydrology/conferences.html>

**40. Trees and Streams Summit: Urban and Community Forestry for Salmon Recovery**

Where- Portland, Oregon

When- March 10, 2000

Contact Info- None

Web Address- <http://www.agnic.org/mtg/2000p.html>

**41. Integrated Decision-Making for Watershed Management Symposium: Processes and Tools**

Where- Chevy Chase, Maryland

When- January 7- January 9, 2000

Contact Info- None

Web Address- <http://www.agnic.org/mtg/2001p.html>

**42. 1999 AWRA Annual Conference: Watershed Management to Protect Declining Species**

Where- Seattle, Washington

When- December 5- December 9, 1999

Contact Info- None

Web Address- <http://www.agnic.org/mtg/99p.html>

**43. NC Stream Restoration and Protection Conference**

Where- Asheville, North Carolina

When- August 18- August 19, 1999

Contact Info- None

Web Address- <http://www.agnic.org/mtg/99f.html>

**44. Klamath Basin Watershed Restoration and Research Conference**

Where- Oregon Institute of Technology, Klamath Falls, Oregon

When- March 9- March 11, 1999

Contact Info- Klamath Basin Ecosystem Restoration Office

6610 Washburn Way

Klamath Falls, Oregon 97603

Tel: (541) 885-8481

Fax: (541) 885-7837

Email: [sue\\_mattenberger@fws.gov](mailto:sue_mattenberger@fws.gov)

Or [akimi\\_king@fws.gov](mailto:akimi_king@fws.gov)

Web Address- N/A

**45. Third Annual American Wetlands Moth Conference: Communities Working Together: A Terrene Institute Conference ( Four Cities)**

Where- Raddison Hotel New Orleans, Louisiana

When- February 18- February 20, 1999

Where- Holiday Inn Golden Gateway, San Francisco, California

When- March 18- March 20, 1999

Where- Omni Indianapolis North, Indianapolis, Indiana

When- April 8- April 10, 1999

Where- Rolling Green Inn & Conference Center, Andover, Massachusetts

When- May6- May 8, 1999

Contact Info- Terrene Institute  
4 Herbert Street  
Alexandria, Virginia 22305  
Tel: (703) 548-5473  
Fax: (703) 548-6299  
Email: [terrinst@aol.com](mailto:terrinst@aol.com)

Web Address- [www.terrene.org](http://www.terrene.org)

**46. WEF Watershed Management Conference- Moving From Theory to Implementation**

Where- Colorado Convention Center Adam's Mark Hotel, Denver, Colorado

When- May 3- May 6, 1998

Contact Info- Water Environment Federation  
601 Wythe Street  
Alexandria, Virginia 22314-1994  
Tel: (800) 666-0206  
Fax: (703) 684-2471

Web Address- <http://www.uwin.siu.edu/announce/event>  
Or <http://www.wef.org>

**47. North American Lake Management Society's Seventh Annual Southeastern  
Lakes Management Conference**

Where- Raddison Plaza Hotel, Orlando, Florida

When- April 28- April 30, 1998

Contact Info- FLMS PO Box 92448  
Lakeland, Florida 33804-2448

Web Address- <http://www.nalms.org/>

**48. 16<sup>th</sup> Annual Salmonid Restoration Conference**

Where- Sonoma State University, Santa Rosa, California

When- February 12- Febraury15, 1998

Contact Info- Jud Ellinwood  
Salmonid Restoration Federation  
PO Box 4260  
Arcata, Ca, 95518  
Tel: (707) 444-8903  
Email: [salrestfed@aol.com](mailto:salrestfed@aol.com)

Web Address- N/A

## Watershed Related Publications

### **What is a watershed?**

United States. Natural Resources Conservation Service. [Washington, D.C.] : U.S. Dept. of Agriculture, Natural Resources Conservation Service 1996.

### **Fluvial forms and processes: a new perspective.**

David Knighton.

London ; New York : Arnold, c1998.

### **Applied fluvial geomorphology for river engineering and management**

Edited by Colin R. Thorne, Richard D. Hey, Malcolm D. Newson.

New York : John Wiley, 1997.

### **Rivers and landscape**

Petts, Geoffrey E.

London, Eng. : E. Arnold, 1985.

### **Morphometry of drainage basins**

Ion Zavoianu ; [translated from the Romanian by Adriana Ionescu-Pârâu].

Amsterdam ; New York : Elsevier ; Bucharest, Romania : Editura Academiei Republicii Socialiste România, 1985.

### **Watershed hydrology**

Peter E. Black.

Chelsea, Mich. : Ann Arbor Press, 1996

### **River networks**

Edited by Richard S. Jarvis and Michael J. Woldenberg.

Stroudsburg, Pa. : Hutchinson Ross ; New York, NY : Distributed worldwide by Van Nostrand Reinhold, c1984.

### **A Study of the bed-load yield from a watershed**

H.S. Woo ... [et al.] Clemson University. Water Resources Research Institute

Submitted to the Office of Water Policy, United States Department of the Interior.

Clemson, S.C. : Water Resources Research Institute, Clemson University, [1983

### **Sedimentation problems in river basins: Project 5.3 of the International Hydrological Programme.**

A. Sundborg

Paris: UNESCO, 1982.

**A variable source area model for stormflow prediction on first order forested watersheds**

Charles August Troendle.  
Thesis--University of Georgia. 1979.

**The river basin: an introduction to the study of hydrology**

David Ingle Smith & Peter Stopp.  
Cambridge [Eng.] ; New York : Cambridge University Press, 1978.

**Drainage basin morphology**

Edited by Stanley A. Schumm.  
Stroudsburg, Pa. : Dowden, Hutchinson & Ross [New York] ; exclusive distributor, Halsted Press, c1977.

**Theory and experiments in the prediction of small watershed response: completion report**

E. F. Schulz and V. Yevjevich ; submitted to Office of Water Resources Research, U. S. Dept. of Interior.

**Long term improvement of the Jacoby Creek Watershed**

Robert C. Wunner. 1996  
GB991.C2 W86 1996 (Humboldt State University library)

**Geology and stratigraphy of the Freshwater Creek Watershed, Humboldt County, California**

Keith Knudsen.  
Thesis (M.S.)--Humboldt State University, 1993. QE90.H8 K58 1993

**Suspended sediment and turbidity on the Franciscan formation, Humboldt County, California,**

Max J. Copenhagen.  
[Arcata, Calif.] 1974.  
Thesis (M.S.)--Humboldt State University, 1974. :  
TC175.2 C66

**Ecological characterization of the central and northern California coastal region**

Jones & Stokes Associates, inc., and Anatec Laboratories, inc.  
Sacramento, Calif. : J.&S., 1980.

**The great watershed of California: Map trek along the unbroken water divide.**

Olaf P. Jenkins  
Monterey, Calif. : Angel Press, 1978.



**The coast redwoods, water, and watersheds**

Peter E. Black

[Syracuse, New York?] 1967.

**An investigation of the failures occurring on the cut slopes of the roads on Bluff Creek Watershed.**

Thesis (M.S.)--Humboldt State University, 1972.

SD425 E54

**Land use considerations & recommendations for McKinleyville: an analysis of public trust**

**resources in the upper watersheds of Mill, Widow White, and Norton Creeks.**

A study prepared for the California Dept. of Fish & Game, the Humboldt County Planning Dept., the

Citizens of McKinleyville ;

prepared by Amanda Brown ... [et al.].

QH105.C2 L35 1998 (Humboldt State University library)

**Watershed conditions in the drainage basin of Redwood Creek, Humboldt County, California, as of 1973.**

Richard J. Janda ... et al; U.S. Department of the Interior, Geological Survey, prepared in cooperation with the National Park Service.

Menlo Park, Calif. : United States Geological Survey, 1975.

GB566.J4 W3 (HSU library)

**Redwood National Park watershed restoration manual**

Terry Spreiter.

Orick, CA: Redwood National Park, Watershed Restoration Program, 1992.

**Summary of watershed conditions in the vicinity of Redwood National Park, California**

Richard J. Janda.

Menlo Park, Calif.: United States Geological Survey, 1977.

GB566.J4 S8 (HSU library)

**An analysis of the buffers and the watershed management required to preserve the redwood forest and associated streams in the Redwood National Park.**

Prepared for the U.S. National Park Service by Edward C. Stone, Rudolf F. Grah and Paul J. Zinke.

Stone and Associates, 1969.

F868.R4 S86 (HSU library)

**Watershed condition inventory of the Hoopa Valley Indian Reservation utilizing Landsat digital data** Kenneth E. Mayer.

[Arcata, Calif.: s.n.], 1979.

Thesis (M.S.)--Humboldt State University, 1979. SD425 M 38

**Watershed Restoration: Principles and Practices.**

Jack E. Williams, C. A. Wood, and M. P. Dombeck, eds.

American Fisheries Society, 5410 Grosvenor Lane, Suite 110,

Bethesda, Maryland 20814-2199. Paperback, 561 pages.

**Integrated Watershed Management: Principles and Practice**

Isobel W. Heathcote

John Wiley & Sons, 1998

**Watershed Management: Practice, Policies, and Coordination**

Robert J. Reimold

McGraw Hill Text; 1998

**Water, Rivers and Creeks**

Luna Bergere Leopold

Univ Science Books; 1997

**Restoring Life in Running Waters: Better Biological Monitoring**

James R. Karr, Ellen W. Chu

Island Press; 1998

**Watersheds: A Practical Handbook for Healthy Water**

Gregor Gilpin

Firefly Books; 1999

**What the River Reveals: Understanding and Restoring Healthy Watersheds;**

Valerie Rapp

Mountaineers Books; 1997

## **PERIODICALS**

Advances in Water Resources.

Air/Water Pollution Report's Environment Week

Australian Journal of Marine and Freshwater Research.

Freshwater biology.

Ground Water.

Ground Water Monitor

Journal of Freshwater Ecology.

Journal of Hydrologic Engineering / American Society  
of Civil Engineers, Water Resources Engineering  
Division.

Journal of Soil and Water Conservation.

**Results from 2<sup>nd</sup> advisory committee survey (regarding offered training)**

The following represents only those committee members that offer watershed training and that were successfully contacted during the survey.

<b>Name/ Organization</b>	<b>Types of Training Offered</b>	<b>Topics Covered in Training</b>	<b>Level of Expertise Training Geared Towards</b>
Bill Weaver/ Pacific Watershed Associates 839-5130	Property Maintenance	Roads and logging workshops	Professionals and laymen
Curtis Ihle/ Humboldt County Resource Conservation District 839-8238 444-9708x5	Riparian enhancement	Erosion prevention and control on slopes, bioengineered control of erosion on stream banks, bank stabilization, riparian monitoring, fish passages	Landowners
Ruth Blyther/ Redwood Community Action Agency 269-2066	Riparian restoration	Culvert design, fish passages, permit requirements, erosion control, bioengineering techniques	Depends on who attends conference and/ or workshop. Can be geared towards professionals and laymen
Linda Rousch/ Bureau of Land Management 825-2300	Riparian/ Watershed restoration	Riparian health, fluvial processes, erosion processes, vegetation identification	All levels, high school diploma through Ph.D.
Steve Namitz/ Yurok Tribe 488-2717x204	Employment training only regarding riparian processes and restoration	Ground technical skills, watershed restoration, sediment inflow into streams, road crew skills (culverts, etc.)	Operator